



GUIDE PRICE

£350,000

Oakley Road

Bromley, BR2 8HD

PROPERTY SUMMARY

£350,000 to £375,000

Sinclair Hammelton are delighted to present this charming, chain-free semi-detached cottage, enviably positioned on the Bromley/Keston borders. Beautifully presented throughout, the property offers a stylish modern kitchen and bathroom, complemented by a spacious through lounge that provides ample room for both relaxing and dining. The first floor hosts two well-appointed bedrooms, ideal for a variety of buyers. Externally, the home enjoys its own private, low-maintenance garden, thoughtfully arranged to create a secluded outdoor retreat.

This delightful cottage combines character, comfort, and location, making it an excellent opportunity for first-time buyers, downsizers, or investors alike.

2



1



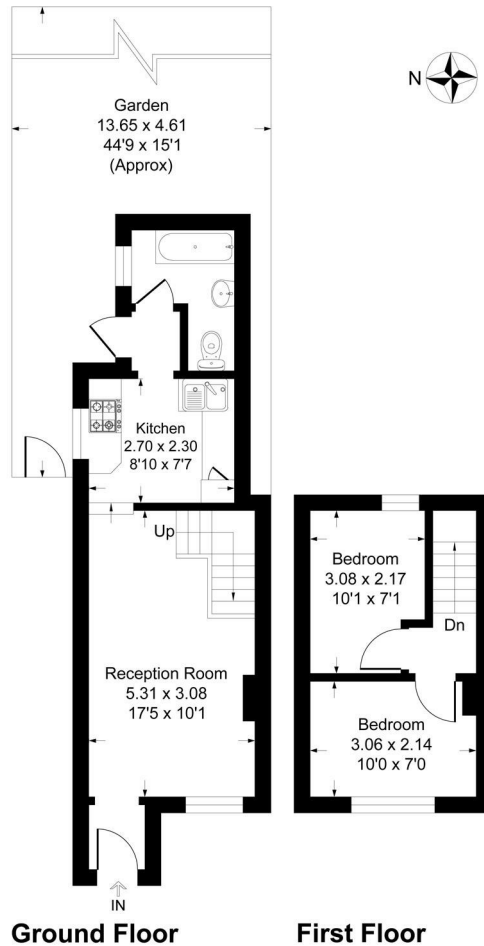
1





Oakley Road, BR2

Approximate Gross Internal Area 46.0 sq m / 495 sq ft



This plan is for layout guidance only. Not drawn to scale unless stated. Windows and door openings are approximate. Whilst every care is taken in the preparation of this plan, please check all dimensions, shapes and compass bearings before making any decisions reliant upon them.
Produced By Planpix

LOCAL AUTHORITY

TENURE
Freehold

EPC RATING
D

COUNCIL TAX BAND
C

VIEWINGS
By prior appointment only

Energy Efficiency Rating		Current	Potential
<i>Very energy efficient - lower running costs</i>			
(92 plus) A			
(81-91) B			
(69-80) C			
(55-68) D		66	
(39-54) E			
(21-38) F			
(1-20) G			
<i>Not energy efficient - higher running costs</i>			
England & Wales		EU Directive 2002/91/EC	

Agents Note: Whilst every care has been taken to prepare these particulars, they are for guidance purposes only. All measurements are approximate and are for general guidance purposes only and whilst every care has been taken to ensure their accuracy, they should not be relied upon and potential buyers/tenants are advised to recheck the measurements

Sinclair **Hammelton**

OFFICE ADDRESS

3a Station Approach
Hayes
Kent
BR2 7EQ

OFFICE DETAILS

020 8462 0360
infohy@sinclairhammelton.co.uk